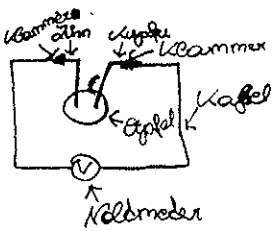
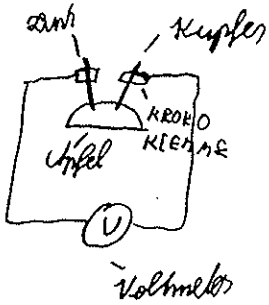
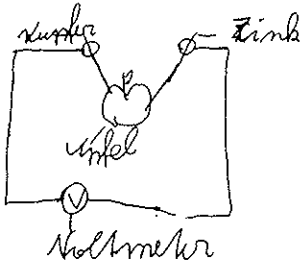
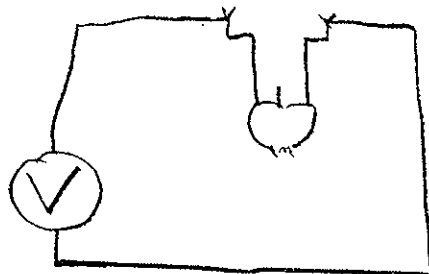
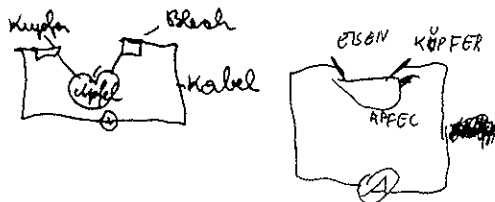
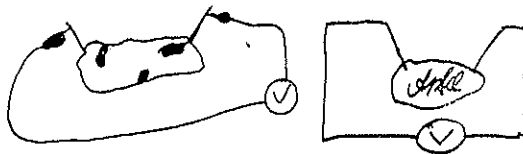
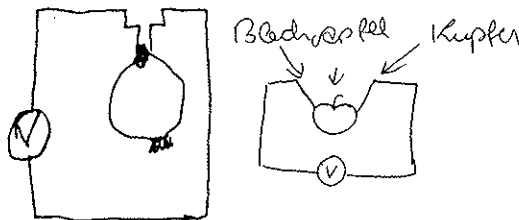
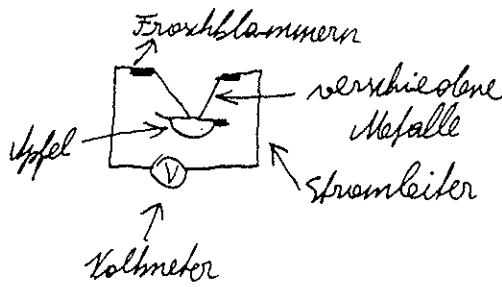
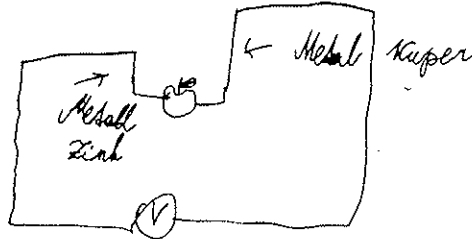
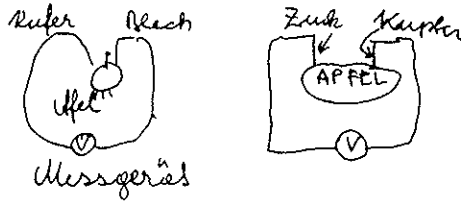
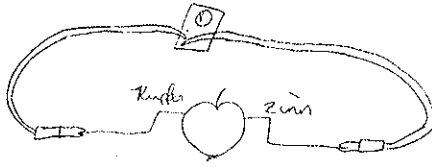


RICHTIG

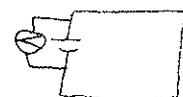
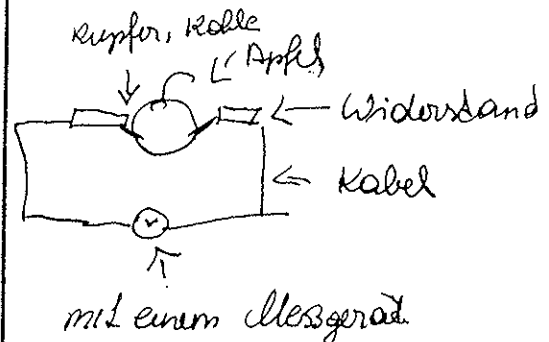
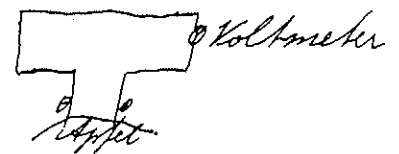
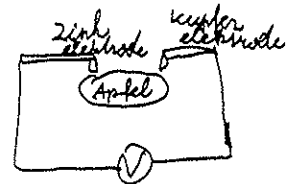
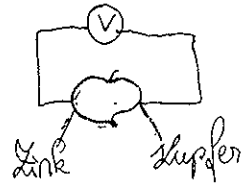
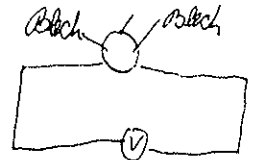
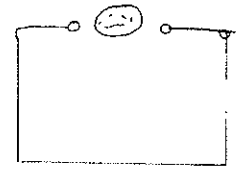


- 1) Kabel in die Krokosklimmen stecken.
- 2) Kabel in den Apfel stecken.
- 3) Krokosklimmen an das Metall stecken.
- 4) Kabel am Voltmeter angeschlossen.
- 5) Auflesen
- 6) Messen

TEILWEISE RICHTIG



FALSCH



mit einem Messgerät

RICHTIG

TEILWEISE RICHTIG

FALSCH

